

Platinum-plated weekend at the Parish Hall



Families enjoying the sunshine at the Teddy Bears Picnic

There was something for everyone at the Parish Hall over the Platinum Jubilee weekend. The celebrations began with the Teddy Bears Picnic, with lots of families spreading their rugs out on the grass in glorious sunshine and enjoying their picnics. With plenty of space to play, a tombola of soft toys, a craft area in the lounge for crown making and cake decorating, a family trail and a raffle, there was lots to do. A wonderful selection of crowns had been entered which made choosing a winner very tricky, but every entrant won a prize.

The weather in the evening had turned wet so our barbecue was a typically English affair with us all gathered in the lounge. Sadly Stuart Hawke's band Steel Weasels had been hit by Covid but two lads from Bristol had stepped into the breach so that there was still some live

music. It was the first big local get-together for a long time and so there was a lot of catching up to do.



A crowded lounge at the barbecue

On Saturday, those of us who were old enough to remember the Queen's coronation enjoyed an afternoon tea, with the opportunity to share our memories of that time. For most of us, these were largely of watching the ceremony on grainy black



and white televisions. We also had a quiz and I think we all enjoyed an afternoon of good company and a magnificent selection of scones and cakes.



Raffle prize winners at the Saturday afternoon tea

In the evening, the barbecue was alight again and those of us who were not still full after such a gorgeous tea were able to enjoy a selection of kebabs and other barbecued goodies. The entertainment was the concert from Buckingham Palace which was screened in the lounge.



The two Marks (Brill and Landon) with head chef, Jan D'Ambrogio.

And it was still only Saturday !!!

Sunday was the day of the Big Jubilee Lunch, which actually ended up not quite as big in numbers as we had expected.

However, it was another opportunity to meet up with people we hadn't seen for a while and there was plenty of Coronation Chicken to go round. Our Platinum pudding competition was certainly not as keenly contested as the one on television but we had enough to go round (just).



*Clare McCartney dish-
ing out the Coronation
Chicken*



*A unique raffle prize,
a regal toilet roll
cover*

The whole weekend was exactly what a community is all about. Lots of people doing their bit, adjusting arrangements in line with the weather, Covid etc and just coming along and enjoying themselves with lots of chatting and laughter. Afterwards we received this thank you note, which was much appreciated.

From all the people who attended the Jubilee celebrations at Westbury Parish Hall, we would like to say a big thank you to Jan and her helpers for all their work and effort and for making it a weekend to remember.

Parish Council

With three councillors away on holiday, we were a little thin on the ground at our June Parish Council meeting. Chairman Simon Phelps opened the meeting with a minute's silence and a tribute to Phil Horsley, who had done so much for this parish and who had died the previous week.

County Councillor report After the usual formalities, our County Councillor Philip Robinson, gave his report. Our application to the Community Speed-watch Fund for better vehicle activated speeding signs had been received and Highways are sending someone to come and assess the situation shortly. Philip also reported that a recent Ofsted inspection had deemed Gloucestershire Children's Services to "require improvement to be good" but had made "significant progress since the last inspection in 2017, when the local authority was judged to be inadequate overall." The Council also has a good record on placing refugee children in school within the recommended fifteen days of arrival, and a lot of good work had been done on local road surfaces to prepare for the Women's Cycle Race.

All good so far, but then we got on to the subject of the closure of **Westbury Court Care Home** and none of us was happy about the County Council's actions on this. Apart from the fact that we had not been consulted formally as a Parish Council, and that several of Simon's emails had not been answered, we found some of the County Council's reasons for the closure unjustified. The Council claims that there is a surplus of care beds but a recent report showed that 240 out of 837 hospital beds in Gloucestershire were occupied by patients who were waiting for support to go home or to be moved to other locations in the community. This

"bed blocking" can lead to ambulances being delayed for hours at emergency departments, which was the reason that a 94 year old gentleman recently had to wait for an ambulance for over 5 hours, alone and in pain in the middle of the night, and died later that day. If there is such a surplus of care home places, then there must be something very wrong with the transfer process, which from recent personal experience, seems to sometimes be slow due to the need to prove that the care home will be fully paid for its services.



Another reason given for closing Westbury Court was that the County Council has a duty to "protect" the private care "market", which seemed extraordinary to me, but Councillor Robinson advised that this was part of the Care Act 2014 and suggested writing to our MP about this. I certainly will, as I cannot see that the private care market should be "protected" if this leads to the problems described.

Although we gave Councillor Robinson some grief over this, we did appreciate him attending our meeting as he must have known that we would give him a hard time and could easily have stayed away and sent his apologies.

Sadly, we have since learned that the County Council has agreed to the closure.

Planning

There were no objections to a planning application for a manège at Gamage Court Farm, and we supported an applica-

tion for the use of an “annexe” at The Gardens, Elton Lane as a separate dwelling to be established as lawful. The proposal for the Churcham development now seems to have been discarded due to the increase it would cause to traffic on the A40 into Gloucester and because there is no chance of a railway station or transport hub being provided. The plan now seems to be for more housing and development around Lydney, as it has both railway and bus stations and better employment prospects. The other three Forest towns will also have further development, although this may be limited by the amount of Forestry commission land around them. All Parish Councils are to be consulted regarding land in their area that may be suitable for development.

Finance The monthly accounts were agreed and the yearly accounts signed off.

Highways As mentioned last month, Network Rail will be clearing scrub from their land alongside the railway track at Jordans Hill to improve visibility for drivers, but there is an overgrown strip of land on the river side of the A48 on the Elton side of the bridge which also impedes the view of drivers and this is currently on the market. We had previously been unable to trace the owner but further attempts will now be made to get this area cleared.

Concerns have also been raised about the Stantway Lane/A48 junction at the top of Wintles Hill where there is also poor visibility and risks from overtaking traffic for those turning right into Stantway Lane. To change the markings at this junction in any way would require a Traffic Regulation Order and apparently this process is due to be simplified shortly so we were advised to wait for this to happen, but Chairman Simon will also speak to the Police and Crime Commissioner. Simon

thanked Councillor Robinson for his help in getting the pavements cleared through the village.



Many people had enjoyed watching the Women's Cycle Race go through the parish, and of course

there was the added benefit of the road repairs. However, Hunt Hill and Stantway Lane are still badly in need of repairs and the drain gratings through the village are silted up. Simon will write to Severn Trent to find out when they are due to start work on the Stantway Lane pumping station as this is holding up the road repairs. It had also been reported that the white line at the T junction at Grange Court seems to have disappeared.

Burial Ground Extension At long last all the necessary permissions have now been granted and we have since heard that work on the school playing field can commence on Monday 27th June. In the meantime the Public Works Loan Board interest rate has increased. However, we have been advised that when the drainage



Work has now begun on the new school playing field

and reseeded of the playing field has been completed, the field should be left until the grass is well established before the fencing and the rest of the work is done. This means that the cost can be

spread into the next financial year and we can use our reserve rather than taking out the loan.

Around the Parish

Footpaths There is a certain amount of frustration at the inaction of the County Council's Public Rights of Way team when it comes to landowners blocking footpaths and this has been experienced by other parish councils as well. It was agreed that we should get together with these other councils to exert pressure on the County Council to take action on this.

Parking A parishioner had reported an obstruction due to cars parking by the preaching cross outside the Lyon. It was agreed to put up signs to remind people not to park there.

Ash Die Back A scheme to plant trees to replace those lost to ash die back is offering whips to anyone who has space to plant them. It seems that these are quite small and therefore will probably need nurturing for a while before they can be planted out but if you are interested, please contact our clerk, Fiona on clerk@westburyonsevernpc.org.uk.

Pedestrian crossing Aylburton Parish Council, like Westbury, would like a pedestrian crossing over the A48 and have invited us to join them in their campaign.

Two Rivers Housing Simon had attended their presentation regarding the improvements that they are carrying out to their properties in terms of energy efficiency. The problem of parking at Stantway was discussed and they will be sending someone out to discuss this further.

The next meeting is on Monday 18th July at 7pm – all welcome.

Di Landon

From letters to Councils (allegedly)

The toilet is blocked and we cannot bath the children until it is cleared.

Please send a man with clean tools to finish the job and satisfy the wife.



Attendance at the June meeting was very nearly back to pre-Covid levels, in spite of a few people being away on holiday. I think there were fifteen of us, which is a pretty good number of people to actively support our community and the role that the Parish Hall plays in it, but more are always welcome.

Rising energy costs are a matter of considerable concern and so it was good to hear Mike Edginton's explanation of the structure of the Hall and how it could be insulated in order to reduce the cost of keeping it warm. Having been built 70 years ago, on the lines of an agricultural building, insulation had not been a top priority but the situation is very different now. He explained how both the roof space and the interior walls could be insulated and has volunteered to investigate further later in the year. His expertise and advice on this is much appreciated by all concerned.

Treasurer's report

Sarah Mitten had sent her report which showed that the Hall is currently running at a loss, and that the cost of utilities is expected to amount to over £10,000 by the end of the financial year. She warned that it may be necessary to use funds held in reserve in order to cover our running costs. The Charity Commission advise that a reserve be kept in case of "unforeseen emergency or other unexpected need for funds" and there was some discussion as to how much this should be.

Severndipity Report

Gen Riley reported on the AGM that had been held on 30th May. The Chairman and committee remained the same but with the addition of Charlotte Hemmings who was co-opted on to the committee. Examination of the constitution showed that some updates are needed to bring it in line with current arrangements. The bar is still running at a loss for most months and therefore ways to address this problem are being considered. The litter bins on the patio are too small and difficult to empty and so it was agreed that four small wheelie bins would be purchased instead. The Wifi system is about to be updated and should be much improved but it may cause a problem with the cricket score board.

Fundraising

The Jubilee celebrations had been well attended and enjoyed by all age groups in the community. Nosh and Natter continues to be popular and the Flower and Produce Show will be taking place on Sunday 4th September. The next quiz is on Sunday 7th August and the fundraisers will be meeting soon to plan other future events.

Rent Review The rental charges have now been increased and the Sports Clubs have indicated their agreement.

Doctors' Surgery Advice has been sought from a surveyor and solicitor regarding the new lease and we are awaiting the outcome of this.

Any other business Football training will be starting again soon and there were several suggestions of other outdoor activities that might be possible at the Hall. A tennis court has long been on the wish list but an outside gym was also suggested.

The next meeting is on Tuesday 12th July at 8pm.

Di Landon

Nosh and Natter

**Westbury Parish Hall
Thursday 14th July 2022**

**Food served between
12.30pm and 1.30pm**

**Soup of the day

**Lasagne, salad and garlic bread

Eton mess

£8.00 two courses £10.00 three courses

Please call us to say that you are coming and please let us know in advance if you have any dietary requirements

**Please either see in person or call
Gail on 760495/ Jan on 760630**

Looking forward to seeing you all and of course if you have not been before we look forward to meeting you too



**Sunday 7th August
at 8pm
at the Parish Hall
Teams of 4, entry £2 per person**



Thank you to everyone involved in the Platinum Jubilee weekend. We celebrated and had a good time and I'm sure the Queen would have approved.

Jan D'Ambrogio



Flower and Produce Show

Sunday 4th September

Schedules will be out soon in paper copy and should be available on our website/ facebook site too.

There will be teas, coffee, cake and lunches and we will keep you posted if there is anything else.

Playgroup for Grown Ups

Our Playgroup for Grown Ups has changed its name. We are now known as the WB or Westbury Bunch and we are meeting on the 3rd Tuesday of the month (rather than Wednesday, as before)) at 7.30pm for a couple of hours.

On **Tuesday July 19th** we are having a **jewellery making session** with **Helen London**, numbers are limited so it's first come first served and you **MUST** book. Contact details as below. info@wosph.co.uk [or ring 01452 229570](tel:01452229570)

Waste Disposal

Just a reminder that the bin at the Hall is for Hall waste only and should not be used for disposing of rubbish from elsewhere. It is clearly marked 'Parish Hall Waste only' but that doesn't seem to always be understood!

Do you think bin men get training or do they just pick it up as they go along?

Church News



We celebrated our Queen's Jubilee in style in our church with contributions from our school and community. Within our Family Service we have just experienced Jesus' Big Picnic and wondered just how many times we would have to fill our church to equal the 5,000! Our next Family Service will be on Sunday 17th July at 10am when a sheep goes missing and there's a job to be done! Please keep an eye on the Parish Magazine or online for services at Westbury, Northwood Green, Rodley, Blaisdon and Flaxley and come and join us.

Rev Sarah 01594 517157

**Westbury-on-Severn Parish
Church Friends
100 CLUB**

JULY 2022 DRAW RESULTS

1st: 21 Rosie Barker £50

2nd: 67 John Wallace £20

3rd: 36 G & V Norris £10

If you would like a chance of winning in our quarterly draw, please contact: Frances Down (760270).

The next draw is in October 2022. There are numbers available for new subscribers. Cost: £12 for the year

THERE ARE STILL SOME OUTSTANDING SUBSCRIPTIONS FROM OCTOBER. Please pay any member of the committee.

Roadside Stall

Westbury's Parish Church Roadside Stall was held on Sunday 29th May, and it was decided that this year the stall would only take place for one day due to the alteration of the bank holiday date for the Jubilee Celebrations. Fortunately the day remained dry although the wind kept the temperature somewhat on the low side. Despite this we welcomed many visitors to the stalls. There was a splendid selection of plants, cakes and books on sale, for which we would like to state our grateful thanks to all those who generously donated items for sale.

The stalls were as usual manned by a very enthusiastic team of volunteers, who welcomed a large number of customers, who proved to be keen to purchase the items, particularly the fine selection of cakes available, which were totally sold out by late afternoon.

There were also teas available in the church during the afternoon and also tower tours.

Westbury PCC would like to express their sincere thanks to all those who donated items for sale, prepared the site and erected the stalls and signage and gave their time so willingly to make it such a successful event.

It is with great pleasure, we can announce that altogether we raised £1,970. A very large thank you to all those who made this such a successful day.

Simon Phelps



May weather

From Simon Phelps

The coldest day in May was May 1st when it was only 10C and on the night of 4th/5th the temperature dropped to 2.5C. However, by 14th and 17th May it had warmed to 22.5C. The warmest night was 9th-10th, when it was 11.5C. The total rainfall for the month was 44.5mm and it rained on 16 days with the wettest being the 15th. The winds were predominantly south westerly.

As far as July is concerned, the weather lore suggests that :-

*"If the 1st of July it be rainy weather,
It will rain more or less for four weeks
together."*

There is a similar message for a fortnight later on St Swithin's Day (15th July)

*St Swithin's Day, if ye do rain,
For forty days it will remain;
St. Swithin's Day, an ye be fair,
For forty days 'twill rain nae mair.
(Scotland)*

Closed Churchyard Working Party

Our June session was a little shorter than usual as a wedding was taking place at 1pm and we didn't want our wheelbarrows to get in the way! Everything had grown a lot since our previous session



and new signs are going to be put up so that visitors understand what we are doing and why the

grass is not neatly mown. Our next session is on Sat 9th July at 10am.

Cafe on the Green

Once again, thank you to all our loyal customers who on a very busy weekend found time to visit us. We started slow and then everyone was there and the noise level soared as people chatted—it was great. We were able to send £95 to Sheppards House in Newent. The next one is on 2nd July and is for Pied Piper, so see you there.

Ann and team

Northwood Green Gardening Club

Our programme of speakers has now finished for this season, as we are all busy in our gardens over the summer. We had a very enjoyable visit to Monk's Spout at Glasshouse in June - a beautiful garden with an astonishing display of carnivorous plants, as well as more traditional plantings, in a lovely setting surrounded by mature trees.

Our next event is a full day visit to two gardens near Cheltenham on 11 August. There is a modest charge for the visits, which will include the admission fee and light refreshments. Lunch can be arranged at a local pub at extra cost.

Our annual social event will be held in a member's garden at Minsterworth on the evening of Thursday 7 July. There is a small charge to cover the cost of drinks and canapes.

Non-members are welcome to join us at any of these events - please contact karen.f.johnson@btinternet.com or call 01452 760970 for more details.

Our regular meetings, with guest speakers, will resume in September - more information will follow in a later magazine.

Karen Johnson



2022 Women's Tour

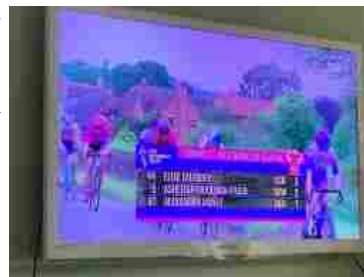
Some of the world's best female cyclists were cheered on by spectators as they raced through Westbury on 8th June as part of the Women's Tour, the UK's most prestigious women's cycling race and the women's equivalent of the men's Tour of Britain. Their route for the day took them from Tewkesbury to Gloucester via the Forest of Dean in what was the third stage of the race, which had begun in Colchester on 6th June. This is the first year that a stage of the tour has been held in Gloucestershire.



A rolling road closure was in place with numerous police motorbikes and

race vehicles to ensure that everything ran smoothly and safely, and the event was backed by Gloucestershire County Council. In Westbury and at Walmore Hill the race was watched by the school children who, I think, found the sprinting police motorbikes, with their flashing lights, and all the excitement surrounding the race, as exciting as the race itself. There was a good turn out of spectators along the course of the race through the parish and we provided lots of cheering encouragement for the cyclists.

And it's not often that you see Westbury on the telly.



Walmore Hill School

The children had a brilliant time on their school trip to Cotswold Wildlife Park.



For some of the younger children it was the first time they had been on a coach.

Westbury Court Care Home

At a meeting of the County Council's Cabinet on 22nd June, the decision was taken to close Westbury Court. An independent consultation with residents and relatives had been carried out by Evolving Communities, an independent Community Interest Company who recorded people's feedback. Their summary of the 'feel' in the meeting made the points that residents and relatives are desperate for the home to stay open, devastated at the news of the potential closure, confused at the reasons given for the closure and sceptical as to whether it is at all possible to influence the final decision.

One relative argued that: "Other care homes have no more facilities than Westbury Court, so why close this one?" and suggested that the home could be refurbished. There was general agreement that the facilities are up to standard, and that not everyone wants or needs a wet room/ensuite. One relative pointed out that the council does not insist that people cared for at home have all these facilities.

The residents and relatives understand that people would prefer to be cared for at home, but are not convinced that there is a fall in demand for places nor are they confident about the practicality of care at

home. "Care at home may work for the less needy. We need more than that."

The biggest concern was that residents may have to leave Westbury Court. Although information was provided about three alternative homes, several people argued that these are not suitable. People feel that Westbury Court is of high standard and 'well loved'. One relative said that when their sister (a resident) was told about the potential closure, she said: "You wouldn't put me in one of those old people's homes?" because she believes she is at home because of the homely feel of Westbury Court.

Relatives and residents strongly agreed that "the staff go above and beyond" in their care for the residents. As the session came to an end, one relative pleaded with us: "We don't have them for much longer so please don't make the time they have left more difficult than it already is. They don't deserve this." The full consultation can be read on <https://glostext.gloucestershire.gov.uk/mgConvert2PDF.aspx?ID=83124>

Westbury on Severn RFC

Mad Max's Unisex

**Boot camp / cross training
with a rugby twist.**

Every Tuesday 7pm

All welcome.

at Westbury Parish Hall

Bring a friend ...get fit and have some fun.



Junior Cricket

We are now half way through our junior season and with around 60 juniors training and playing each week it is certainly keeping all the coaches on their toes! It is great to see the improvement across the age groups and to look around the field on a Friday night and see so many smiling faces.

The U15's have been working hard to develop their joint team with Newnham and this is growing in strength each week. The U15's have played 3 games so far with a win, a lose and a rain stopped play for the results. In the winning game against Huntley, Westbury/Newnham batted first and ended with 91 for 7 off 20 overs. Huntley were 49 all out in the 15th over with Will Keane taking 3 wickets.

The U11's have managed a few more games with their first win coming in the



The U11s with coach, Andrew Cueto

same week as the U15's game. In their winning game against Woodpeckers, Westbury were 103 for 2 at the end of their overs and restricted Woodpeckers to 71 for 10. Rose Wilman managed an incredible 4 -0 in her two overs and George Nice and Daisy Jones put on an impressive opening partnership of over 20 runs for no wickets in their overs.

The U13's have only managed one league game this season due to the British weather bringing its usual mix of summertime unpredictability. Their first game against Newent resulted in a loss, however with a strong team developing each week we are confident their next match will go in their favour.

Last Sunday saw our first U11's inter-club match which enabled some of our younger U11's to experience a match situation on the 'real' pitch. This game was fantastic with all the juniors batting and bowling and learning some match play tips along the way. There were lots of smiles, some really impressive batting and bowling and was a great opportunity for them to pad up against each other. Some of our juniors got their first runs and wickets for Westbury with many more to come over the next few years, we are sure. With some brilliant run scoring by Fletcher Young and Harry Hyett and an impressive catching display from George Jones, it certainly showed us all what a great team we have developing both for now and for the future.

The All Stars are developing week on week and are enjoying helping to plan the sessions, picking out their favourite games each week and getting better and better as the season progresses. They are learning the always complicated art of bowling over arm and we have some amazing batters and fielders in the group. As always none of this happens without a fantastic group of hard-working coaches and helpers who work tirelessly throughout the junior season to ensure our juniors have fun, progress and keep coming back each week so a huge thank you to everyone who helps out. *Emma Nice*

The U15's have since played Aston Ing-ham which was a great effort against a very strong side so well done team and coaches.

Women's Cricket

There was a fun evening of cricket at the Parish Hall on 21st June when



Westbury's team against Huntley

Westbury played Huntley. Westbury came a close second but it was the atmosphere and good

time that made it a win for everyone. It was

great to have some of the U15's also join playing. Thanks to Nic Edginton and Ian Dunn for umpiring and scoring

Men's Cricket

Westbury's fortunes at 1st team level looked up with two magnificent wins in the month, whilst the 2nds had a mixed month with a win and a loss and the rain claiming the rest of the games.

For the 1st XI, a fine win against table toppers Kingsholm CC put a spring in the step of a team seeking a first win and, after a couple of losses the month finished with a magnificent win against Aston Ingham 1sts. It should be noted Aston Ingham were boosted by a South African player who clubbed a century, but it proved insufficient as Jake Bonser replied in kind with a spectacular 61 in 57 balls including 3 enormous sixes. This was followed by a gutsy 47 by Fran Stirrup who, half way through his innings, collapsed in a heap in a manner that, were he a horse would have led to him being quickly surrounded by a tent. He managed to limp to the boundary supported by Dan Jarvis where he was patched up and later returned to the fray to smash the winning runs. Whilst Fran was laid up, Dan Hockaday (21), Dan

Jarvis (31) and Gary Morgan (16) also hit useful runs to reel in the target of 223 with just over 2 overs to spare.

On the bowling front, the spinners did the majority of the damage with Ed Edginton (3-35), Dan Hockaday (3-62) and Danny Anderson, who isn't a spinner but managed 2-26 anyway. Having scrutinized the scoresheet carefully I can report that Charlie Gayther did nothing of note this week.

For the 2nd XI, the high point of a quiet month - which was mainly characterized by the club trying to fit a quart into a pint pot with a surplus of players - was a good 3 wicket win against Highnam with Neil Wyman (42), Will Hargreaves (30) and skipper Glyn Bailey (35) providing the bulk of the runs.

This represented a high water mark for Will Hargreaves who, I am sad to report (but will anyway), went on to drop without doubt the simplest catch I have seen in a subsequent midweek match. (Obviously the ones I dropped I didn't see). Moving towards a ball moving at the slowest speed possible without actually falling vertically to earth, poor Will was mortified to see the ball bounce off his finger tips and down to terra firma. His agony was compounded by his brother, Jonathan, taking a magnificent tumbling catch a few balls later. A Cain and Abel moment if ever there was one.

Anyway, the month ended with the 1sts lying 9th in Division 1 of the County League and the 2nds 6th in the Forest of Dean / Gloucester/ Cheltenham Premier Division.

Mark Landon

Editor: Andrew Landon
Everything else: Di Landon
diana.landon12@gmail.com
Hayden Farm, Rodley, Westbury-on-Severn
GL14 1RE
01452 760531