



A Dream of an Evening

*The opening song of the evening with the cast and their puppets.
Thanks to Mick Riley for all the photographs.*

November can be a dreary month, but one event which can always be guaranteed to lift one's spirits is an evening watching the annual production from Westbury's Youth Project. This year was certainly no exception as nearly twenty enthusiastic youngsters took to the stage to give us an evening on the theme of Dreams and Nightmares.

Beginning very appropriately with Abba's 'I Have a Dream', the cast were joined by a wonderful array of glove puppets, which they had made themselves at workshops provided by Bea Daws. There followed an amazing programme of songs and some very funny and entertaining

sketches, including one written by cast member Isabelle Humphreys and another by Caitlin Riley, who also led some beat drumming.

Each of the items was introduced by cast



*Pearl Boulton, Poppy Smith, Ted Barry
and Edward Rockley*

members who also added some very corny jokes to keep us entertained between acts.



The final song, Eurythmics 'Sweet Dreams' brought the evening to a close, but I think everyone in the audience went home boosted by the energy and enthusiasm of the cast.



Edward Rockley, Jack Nicholson, Ted Barry and Isabelle Humphreys in a "Sherlock Bones" sketch

So the names to watch out for on Westbury's stage in the future are:- Evie Essex, Yasmin Carter, Lyra Dawson, Ted Barry, Edward Rockley, Isabelle Humphreys, Amelie Hughes, Poppy Smith, Pearl Boulton, Jack Nicholson, Phrynna Kibble, Amber Fransham, Willow Nunn, Nula Gough, Xanthe and Tristan Chapman Brow, Pippa Cresswell and Ellie Whymark.

Equally important are the young unseen helpers like Emily, Talia, the two Caitlins, Amelie and Patience who provided backstage support and makeup. Young Hannah McCartney was helping her mum Claire on the sound and lighting and Harriet did the artwork for the posters and programmes.

We know that the adults involved in the Youth Project rightly want the youngsters to take the lion's share of the credit for its success, but we also know that it would not happen without all the hard work that they put in during the months of preparation for the show. So a big thank you to them, especially to Nicola Atkinson, whose enthusiasm and energy just keeps coming. I know she will already be thinking about next year's show and I'm already looking forward to it. *Di Landon*

Westbury School Craft Fair

A lot of hard work had gone into this event and, particularly impressive, was the transformation of a small off-stage area into a suitably cosy grotto for the most important visitor of the day.



With lots of stalls selling some amazing craftworks, some very tempting refresh-



ments and songs from the children, it was a very successful day for the Friends of Westbury School.

Parish Council

It was clear from the agenda that the November Parish Council meeting might be a bit longer than average, and so it transpired. One member of the public had come along regarding a planning application but, after looking at the plans concerned, it was decided that a site visit was needed and therefore discussion was postponed until this had taken place. There were several more planning applications but we left those until we had heard our County Councillor, Philip Robinson, give his report.

Top of his list were the problems associated with Stagecoach's drastic cuts in local bus services. As cabinet member for education, skills and transport, he has been deeply involved, and his team have managed

to save about 70% of the journeys that would have been lost. Where no bus provider

could be found, they are promoting alternative transport solutions such as dial-a-ride, community transport and the recently launched 'Robin' "demand responsive" service. However, Stagecoach argue that the reason that alternative operators have not been found for all routes is that some routes are simply not viable. In this parish, the Stagecoach 748 service, which ran between Blaisdon and Westbury and was used by children travelling to school, was one of the routes cut, but this has now been replaced by "home to school" transport provided by another contractor.

Another local concern that Chairman Simon Phelps had raised with him was



whether there were any plans for the now empty Westbury Court. Councillor Robinson said that a security system with 24 hour monitoring has now been installed and that the County Council were considering making the building available to One Gloucestershire who are described as bringing together "health, social care, public health and other public, voluntary and community sector partners and working to improve the health, wellbeing and care of our citizens at every stage of life." They are aligned to the Gloucestershire Health and Wellbeing Board.

Readers may have heard that the bid for the sites at Oldbury and Berkeley to become the first UK nuclear fusion plant has been unsuccessful. However, Councillor Robinson reported that Oldbury has been identified by Rolls Royce as a potential site for one of its new generation of small modular nuclear reactors (SMRs). These are around a tenth of the size of a conventional nuclear plant, and could each generate enough power for around one million homes.

Planning It was then back to planning applications. We agreed to object to the retrospective application for various alterations to the Grade II listed Northwood House, in line with the conservation adviser's report, which stated that the works undertaken have failed to preserve the special character of this listed building. Applications regarding the Lecture Hall, in the village, and Chapel House in Broadoak, required site visits and an application to remove diseased trees in Westbury Court Gardens was supported. We had no objections to an application for a two-storey rear extension at 9, Stantway Lane and supported the application for the erection of a porch and extension with associated works at Cleeveholme in Rodley. We also supported the application for the annexe at The Gardens at Elton to lawfully be a separate dwelling.

Finance After agreeing the monthly accounts, we had a brief discussion about the salary paid to our clerk, Fiona, and agreed that it should be linked to the NALC guidelines. As previously agreed, the precept will not be increased this year.

Highways A lot of problems were mentioned, including a deep pot hole at the junction by Elton Garage, flooding at the Dinney and near Cleeve Farm, and gratings through the village which are still silted up. It was also reported that the recently resurfaced Ampney Lane is not looking good, and it turns out that this was an experimental form of surfacing which does not appear to be weathering well. It was also felt that the failure to repair the road surface at Hunt Hill on the grounds that it is subsiding was unreasonable, as the area with the worst pot holes is not subsiding at all. Good news for those in Lower Ley Lane which is due to be repaired soon.

Burial Ground Fiona reported that she is just waiting to hear from the Public Works Loan Board regarding our loan and that negotiations regarding the rent of the school playing field have commenced. The work on the field will cost nearly £74,000 which will have to come out of Parish Council funds generated by the precept.

Play Area The weather has not been suitable for repairs to the wetpour surface so these will be done when we get a dry spell. We planned a working party after Christmas to rake up the leaves and have a general tidy up.

Footpaths Jeff Wheeler, the Public Rights of Way (PROW) Officer, had emailed Fiona listing the considerable amount of work that has been done on our local footpaths recently, together with details of more work that will be carried out soon. The damaged bridge on the footpath between Broadoak and Elton Nurseries will be added to the list.

Climate Change I reported that I had recently attended a drop-in event regarding the development of a new community energy initiative in the Forest of Dean. The first stage of this is the installation of community owned solar panels on the school and leisure centre in Lydney to reduce carbon emissions and energy costs. This is to be funded by a community share offer and, if successful, could be a blueprint for further local energy production. Further information can be found on the website www.aurora-h2020.eu/fod-home/

Around the Parish The ‘retired’ telephone kiosk at Northwood Green, which has been turned into a book exchange, is well-used and much appreciated and it has been suggested that this could be a possible use for the kiosk in the village as well. Would anyone be interested in taking this on as a project – or are there any other ideas for it? Please email clerk@westburyonsevernpc.org.uk or me at diana.landon12@gmail.com with your thoughts on this.

Correspondence Fiona had received an email regarding a campaign by several parishes along the A48 for more pedestrian crossings. Alvington and Aylburton, like Westbury, have unsuccessfully campaigned for

a crossing for many years and on 20th February they are holding a “mass crossing” demonstration

in support of their campaign and have invited us to do likewise. They have suggested that we time ours for 2pm —



In June 2022 villagers in Aylburton did a mass crossing of the A48 to highlight the need for a pedestrian crossing.

details later, but please let us know if you are interested in joining this.

Our next meeting will be on Monday 12th Dec at 7pm at the Parish Hall. This is a week earlier than usual to avoid the busy weeks before Christmas. *Di Landon*



There were fifteen of us present at the November meeting of the Parish Hall Management Committee, and this is reassuring when so many communities and businesses are struggling to cope with price rises and a general lack of enthusiasm after Covid.

The questions of both the Hall's security system and WiFi, which had been discussed last month, still need further investigation and discussion, but both are working satisfactorily at the moment. Mike Edginton reported that the insulation for the bar's cooler has been improved and cones have been put in place and a new sign ordered to remind people not to park across the ambulance access to the sports field.

The vexed question of how to deal with bookings where there is underage drinking and/or alcohol being brought in from outside rather than purchased at the bar, was again discussed. This is a complicated issue as the protection of bar staff and the Hall's licence is clearly important, but we also need to encourage bookings, the majority of which pose no such problem. It was agreed that this needs deeper discussion, with more information

required about insurance and licence requirements, about possible changes in the booking procedure and about how other Halls deal with this issue. It was therefore agreed to look into these questions and defer any decisions until the January meeting.

Treasurer's report Sarah Mitten had sent her report which showed that the Hall's financial position is sound at present. The contract for gas has been renewed and, as the electricity contract is valid until next July, this will be discussed further in May 2023.

Projects The process of getting an asbestos survey has begun and so the insulation of the Hall roof has had to be deferred until this survey has been completed.

Severndipity The Hall bar had run at a loss last month but generally it is keeping its head above water. The community bars on Tuesdays and Saturdays are continuing and are breaking even. With rising costs, some prices have had to be increased slightly and so the effect of this will be monitored. There was some discussion about the problems of keeping beer on tap as this does lead to considerable waste, but the idea of only serving bottled drinks does not go down well with our clientele, so we do want to keep the pumps working.

Fundraising Jan reported on the recent Jumble Sale, which had been so successful that another one is planned for the Spring. The upcoming Kebaberet and the Pre-Christmas Bash both promised to be very enjoyable.

Any other business The Doctor's surgery is short of admin space and may be interested in using part of the changing rooms on a temporary basis. There is still some funding available from a grant received for making the Hall more accessible for those with dementia and so Jan has ordered some red toilet seats which

have been recommended.

The next meeting will be on Tuesday 6th December, rather than our usual second Tuesday of the month, due to another booking.
Di Landon

Hall Happenings

Two very successful events have taken place at the Parish Hall in November.

On 19th, our local Katie Hyett (or Tittsalina Bumsquash, to give her her stage name) organised a Kebabaret, at which she and four of her fellow burlesque artists gave us a wonderfully entertaining



and fun-filled evening—and a bit of a first for the Parish Hall! It was enjoyed so much by all who came (and the performers) that we hope to repeat it next year.

And on 26th, Stuart Hawke and his band, Steel Weasels, had us all up and dancing at the Pre-Christmas B a s h , which was held to raise funds for the maintenance of the defibrillator at the Hall. Stuart was the organiser of an American Night on 29th August 2015 to raise money for the defibrillator and has been looking after it ever since. So, many thanks to him—we all hope we never need it—but it's good to know it's there.



the defibrillator at the Hall. Stuart was the organiser of an American Night on 29th August 2015 to raise money for the defibrillator and has been looking after it ever since. So, many thanks to him—we all hope we never need it—but it's good to know it's there.

Nosh and Natter at Westbury Parish Hall Thursday 8th (not 13th) December

Food served between
12.30pm and 1.30pm

Our Christmas menu is

Roasted red pepper and tomato soup
Mustard glazed gammon
with Dauphinoise potatoes, red cabbage,
peas and carrots

A trio of desserts

Coffee and mints

£10.00 two courses: £12.00 three courses

All ages welcome

Please let us know in advance if you have any dietary requirements other than the above

See in person or call Gail on 760495 or
Jan on 760630 to book

There is a slight increase for our Christmas menu and we will have a raffle on the day and the bar will be **open**



All profits made from our Nosh 'n' Natter will go towards kitchen improvements

Charity reg no: 301644

Thank you for your
continued support

Merry Christmas and a Happy New Year

QUIZ

at
Westbury Parish Hall
on Sunday 11th December at 8pm.
Teams of four at £3 per head
to include mince pies and
sausage rolls
Quizmaster Frank Treasure.
Please note change of date



Thank you for supporting the hall.



It's our Parish Hall and without your support during the year we would be unable to maintain and keep it running.

**MERRY CHRISTMAS AND
A
HAPPY NEW YEAR
FROM WESTBURY PHMC**

Visit from Bishop Rachel

Westbury Parish was honoured to receive a visit from Bishop Rachel Treweek on Thursday 10th November. Bishop Rachel had requested that she might visit two farms that gave an overall

representation of the types of farming practiced within the parish.

The first visit of the morning was to the Stephens family at Brook Farm, where she took particular interest in the dairy farming sector, being shown the milk storage



facilities and the milking arrangements. She then walked around the livestock housing, and asked many questions concerning the current state of international food production and the effects it has upon British agriculture. She much appreciated the opportunity to be in close proximity to the cows and calves she saw during the visit.

The second farm visited was to the Hewlett family at Rodley Court.



Here she was able to hear something of the challenges faced by the arable sector, beef production and most particularly the egg production sector. Bishop Rachel showed a particularly keen interest in the egg sorting and packaging process, stating how impressed she was with all the modern techniques. She also pointed out that she was in fact a consumer of the eggs produced at Rodley Court.

Bishop Rachel said, later in the day, what a wonderful and interesting time she had had and how much she valued the opportunity to meet with farmers and learn something of the current concerns facing farmers in Gloucestershire.

Simon Phelps

Closed Churchyard

Our November working party at the closed churchyard led to some surprising discoveries. At the back of the churchyard, our volunteers found, under the grass, a wide path of paving stones leading from the gate in the corner, which we think probably goes to the south door of the church, although we haven't got that far in uncovering it yet. And while cutting back some grass near one of the graves not far from the war memorial, I found a large headstone, lying flat on the ground and completely overgrown with grass. Once uncovered, the epitaph to James and Fanny Green, who died in the 1920s, was easy to read.

So, a worthwhile morning's work, and some good weather as well. **Our December working party will be on Saturday 10th December**, weather permitting, between 10am and 1pm. If you can spare an hour or two to join us, you would be very welcome.

Di Landon



'Before we begin, let's all take a moment to google the true meaning of Christmas'



COFFEE MORNING

SATURDAY 3rd DECEMBER

10.30 – 12.30

To be held at St Peter's Church
NEWNHAM ON SEVERN

HOMEMADE CAKES, COFFEE AND TEA

Lots of Christmas Goodies



THE ROYAL FORREST OF DEAN CARRIAGE TRIVING GUILD

Raising For The Disabled

Charity No. 1174062

Vale of Castiard WI



Our December meeting is traditionally a time to socialize and eat and drink! Instead of our usual Christmas party, this year we will be meeting at the Royal British Legion at Blakeney for festive skittles and buffet. This will take place on Wednesday 21 December at 7.30pm. As we have to confirm numbers in advance, please let us know before 11 December if you would like to join us. Visitors and new members are welcome to join us for any of our meetings. *For more information, please contact our President, Gill Western, on 07879 532060 or Secretary Sue Stephens on 01452 760773.*



Memory Café - on Tuesday 20th Decem- ber 2022



The Memory Café aims to provide a fun, friendly, safe and supportive space for people living with dementia or memory loss, their partners, families and carers. Supported by Artspace, Cinderford as part of the Mindscape Project, people can expect to enjoy a variety of craft and activities.

11.00am Arrival and enjoy a cuppa and a cake

11.30am Activities provided by Mindscape tutors

12.30pm Soup and rolls served.

1.15 Finish

There is no charge for attending this event so why not pop along and join us?

Call: 07926 986 247 to find out more

The centre is located beside the A48, and has on-site parking, disabled access and facilities. Stagecoach Bus No 22/23 also stops and departs every ½ hour from outside the centre.

The Harvey Centre, Main Road, Minsterworth, Gloucester, GL2 8JH

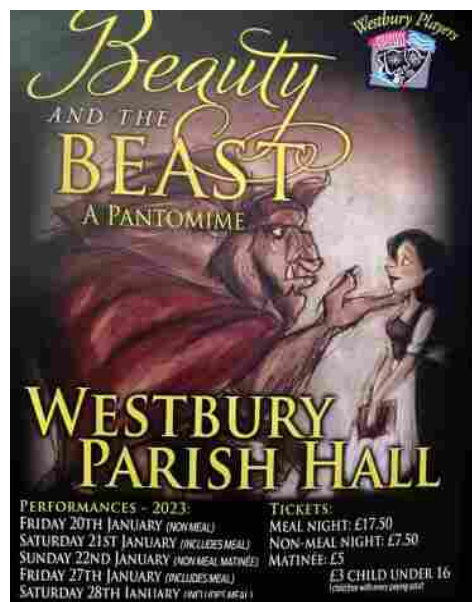
Come and join us – a warm welcome awaits!



My phone takes dreadful photos (as you can see) but these are some of the leaf prints that we did at the October Memory Café. We have a

very enjoyable morning each month - lots of laughter and some creativity too!

Westbury Players



Tickets for the last night of the pantomime on Sat 28th January sold out at the Box Office and tickets for the other nights are selling fast. So please book soon, by ringing David D'Ambrogio on 01452 760630, to be sure of a seat. Tickets for the matinee on Sunday 22nd January, at 3pm, can usually be bought on the door, but it is safer to book in advance.

Help Wanted with Sound and Lights

We need a volunteer to help with the sound and lighting for the pantomime. We would love to hear from anyone of 16 or over who is able to come to rehearsals on Sundays from 6-9pm as well as the performances. You would be helping Claire McCartney so would not be doing it on your own

Please contact Mark Landon on 07598530782 or email westburyplayers@gmail.com

Westbury-on-Severn Young Farmers Club

A huge thank you to everyone that supported and helped out at our Bonfire Night on 5th November! We raised a record breaking £5,834 for our chosen charities, Farms for City Children and Club Funds!



Northwood Green Gardening Club

Our final meeting for this year is our Christmas party, on Thursday 8th December. There will be no speaker at this event - instead we will have a quiz and games, with a bring-a-plate-to-share buffet. This is always a fun evening and a highlight of the club's year. On Thursday 12th January, we begin our new programme with a visit from Perry Sladen, who will talk about his experience of growing grape vines at his Oakle Street vineyard.



Non-members are welcome to join us at any of our events. Non-members £3, annual membership £12. Please contact karen.f.johnson@btinternet.com or call 01452 760970 for more information.

Westbury PCC

Westbury PCC have decided to support the Forest Food Bank Initiative by placing a collection box just inside the north door of the Church, for donations of non perishable foodstuffs. Unfortunately on



Remembrance Sunday, the food products that had been donated were removed from the box by an unknown person. The PCC are shocked that someone could enter the Church and remove donations left for those so sadly in need of support.

If you wish to donate to this worthy cause in future, please leave your donation in the Church on a Sunday morning before a service, or contact one of the Wardens, who will make arrangements to collect any donations.

Church Wardens: Annette Ellis 760232
Simon Phelps



Westbury-on-Severn C of E Primary School

Would you be interested in becoming the Clerk to Governors for our school?

We have a vacancy if you think that this would be suitable for you. For more information please see our advert that is presently on the Gloucestershire County Council website.

<https://ww3.gloucestershire.gov.uk/schoolvacancies/details.aspx?ID=26766&page=0>

If you would like to know more about being a Clerk please do not hesitate to give us a call on 01452 760303, or email admin@westbury-on-severncofe.gloucs.sch.uk

October weather

Looking back on October's weather on a cold, dark November day, it is hard to remember what it was really like, so thanks to Simon Phelps for providing these figures.

The warmest day was on 1st Oct, with a temperature of 19C, and the warmest night was 3rd/4th when it was 12C. Even on the coldest night, which was 10th/11th, the temperature only dropped to -1C and the coldest daytime temperature was 14.4C on 10th.

After such a dry summer, October certainly made up for it with 21 days with rain and a total rainfall of 125mm. The wettest day was 23rd with 39mm of rain and a thunderstorm. The wind direction was predominantly westerly. The average maximum temperature was 16.4C and the average minimum temperature was 6.7C.

What to look out for in December Weather Sayings

If it rains on the first Sunday of December, it will rain for a week.

Look at the weathercock on St. Thomas's Day, (21st) at twelve o'clock, and see which way the wind is, for there it will remain for the next lunar quarter.

A green Christmas makes a fat churchyard

At Christmas meadows green, at Easter covered with frost.



Cafe on the Green

Saturday 3rd December
Northwood Green Social Hall
10.00 til Noon



Before you head to the shops, feed the reindeer, pluck the pheasant or whatever, top up those energy levels with a tasty bite and a cuppa. Find your Christmas reading at the book stall, all in aid of our charity this month Art Shape.

Art Shape runs a countywide programme of arts courses and projects with a specific focus on disability issues and social inclusion

Remembrance Day

On Sunday 13th November, the traffic stopped on the A48 for the annual Act of Remembrance for those who gave their lives in the two World Wars. The service was held at



Minsterworth Church this year, and wreaths were also laid at the War Memorial at Westbury.

In the weeks leading up to Remembrance Day, collecting tins had been placed in numerous local businesses and meeting places, and door-to-door collectors were out and about collecting contributions

towards the work of the Royal British Legion. At the meeting of the Legion's Westbury branch, we learned that a total of £1898.71 had been donated in Westbury and a further £1597.44 in Minsterworth. Many thanks to all those who gave so generously and to John and Beryl Watts who organised the collection and did so much of the work involved.



Sports Rugby

Westbury remain top of their league after a month of mixed fortunes. On 5th November, they won a feisty encounter with Cinderford Bucks, which they won 15 – 7, with scores coming



from Max Kaufmann, Paul Reddon and Aaron Morgan. Westbury's man of the match was the whole team, as everyone played with much heart and passion. Credit also to Cinderford, who played

with great shape in attack and defence. On 12th November, Old Cryptians 3rds unfortunately had to cancel our fixture, but Westbury were awarded the points. On 19th November, we were away to Berry Hill 2nds who won 49 – 12. This

wasn't the result Westbury wanted but it was a deserved win for a very well drilled Berry Hill 2nds. The Boys in Blues' points came from Max Kaufmann, from a quick penalty, and Charlie Barnes, who made a great break and was awarded Man of the Match.

Captain Robbie Pritchard said "There were many mistakes today and this can only be improved in training. Whilst this wasn't the result Westbury wanted, it's a massive improvement from last year. We move on to our next training on Tuesday. Well done all, and thank you for the support"

On 26th Nov, despite all the efforts from our fixture secretary, Mark Cinderey, a friendly fixture was not found. Instead there was training in preparation for our biggest league game vs Smiths 2s at home next week – 3rd December.

Football

We are a bit short of football reports this month but although elite football may be taking a break for the World Cup, grassroots football continues. However, we can only give you Westbury's results for November and hope to bring you more news in the next edition.

On 5th November, Westbury drew with Howle Hill 2 -2 at home and then on 12th Nov were away to English Bicknor Res and drew 3 – 3. Their next League game on 19th Nov was also away against Ruardean Hill Rangers Res and they lost 4 – 2. However, on 26th Nov, they had a County Cup game against Frampton United Reserves and won 5 -2.

Editor: Andrew Landon
Everything else: Di Landon
diana.landon12@gmail.com
Hayden Farm, Rodley, Westbury-on-Severn
GL14 1RE
01452 760531