

Westbury looks back on 70 years of cricket . . .



. and forward to its future

August bank holiday saw Westbury-on-Severn Cricket club celebrate its 70th Anniversary and what a weekend it was!

The celebrations began on Friday evening with the Junior Presentation and Celebration evening. This was a fantastic opportunity for our junior players and parents to come together and celebrate the end of our 7th year together. Prizes were awarded across the 3 league age groups and a delicious BBQ was cooked for us by Stu and Jo. The juniors enjoyed a giant game of cricket which only ended because it got too dark to see the ball! A great evening

was enjoyed by lots of our junior members and coaches. A big thank you to everyone who came along and to all the people who made the evening such a success. Saturday saw wins for the 1st team and the Wolfhounds (3's), with a big well done going to Oli Jelfs who made his first 50 and 100 for the club in the match against Newent. The 2nd XI were playing really well but unfortunately weather stopped play and the game was ultimately abandoned.

The celebrations culminated with Sunday's celebration game: Players vs Chairman's XI. *(continued on back page)*



There were a few regulars missing from the August meeting of the Parish Hall Committee, which is to be expected at peak holiday times. However, the meeting was much needed as there were several important issues for discussion.

The contract for the electricity supply will soon be due for renewal and this is by no means as straightforward as it sounds. Jan has been liaising with both Bionic, who provide business energy comparisons and advice, and our supplier, EDF, and is hoping to come up with the best option for the future contract. Electricians have started work on the various electrical problems that had come to light during the recent inspection and it was agreed that hall users need to be asked to report any problems that they come across to the Hall committee.

Severndipity (Bar) Report The Severndipity Committee suggested that the tables in the lounge should be changed to round ones and this led to a discussion regarding possible improvements to the lounge involving furniture, lighting and decor. This is for further consideration in the future, although it was felt that round tables would cause difficulties when two or more tables needed to be put together for meetings, Nosh and Natter etc. Some research as to what grants may be available for this work is also needed.

Fundraising There are lots of events planned over the next few months (see pages 2-5) and tickets have been selling well. Schedules are out for the Flower

and Produce Show and we look forward to seeing lots of entries in the wide variety of classes. Helpers have been recruited for the Kebabaret evening, which is back by popular demand and all but one of the VIP tickets have now been sold. There is a new line up this time, and if they are anywhere near as good as the last line up (which we know they will be) it will be a great evening.

Doctor's Surgery Gen Riley was able to report good progress with the lease negotiations, although the length of the lease had to be approved by the Charity Commission (*this has since been done*). There are still a few points to settle regarding the electricity supply but at least it seems that the surgery will remain where it is for the foreseeable future.

Other matters Some of the benches on the patio have seen better days so Brian Wyman offered to check and repair them, if possible. Mark Brill and Tim Smith have completed the fire risk assessment and there are a few action points, mainly regarding the evacuation point signs. So with lots of events at the Hall to look forward to, we meet again on Tuesday 12th September at 7.30pm.

Di Landon



Get your entries in now for the Flower and Produce Show!



Exhibits on show in 2021



**Vanity
Trap will
be play-
ing be-
tween
12 noon
and 3pm**

Charity No 301644
Westbury On Severn Parish Hall

FLOWER & PRODUCE SHOW

SUNDAY 3rd SEPTEMBER 2023

Schedules available online or paper copy
Contact Jan or pick one up at the Parish Hall

Lunch Served 12noon - 2pm

Lunch
£8.50 per
person

Choice of Salad - Ham, Cheese
Sausage Plait or Salmon +£3.00
Pre-ordering necessary for lunch
Call Jan 01452 760630

BAR OPEN * LIVE MUSIC

Tea, Coffee & Cakes available from 10am

Exhibits entries must be in the Main Hall between 10am-12noon
Main Hall will re-open at 2pm after judging



Nosh and Natter

Westbury Parish Hall

Thursday 14th September 2023

Food served between
12.30pm and 1.30pm

Tomato soup

Dish of the day

Lemon fridge tart with cream

£8.00 two courses £10.00 three courses

Call us to say that you are coming
and please let us know in advance if
you have any dietary requirements

Please either see in person or call
Gail on 760495/ Jan on 760630

*We have the Flower and
Produce show on Sunday 3rd
September and will be serving
lunch from 12pm.
If we are able to use any of the
ingredients from Sunday on
Thursday we will, hence we are
not stipulating exactly what we
are having ... and if you want
to know more give me a ring.
Jan 760630*

..... and in October

Good Old Fashioned JUMBLE FREE ENTRY Sale

Charity Reg No 301644

A fundraising event for the Parish Hall
Jumble donations required
Call to donate your jumble
Some tables available
for private sellers. £5 per table
CALL 01452 229570

**SUNDAY
8 OCT FROM 2:30PM**

Cakes, Coffee, Tea Available

**WESTBURY ON
SEVERN PARISH HALL**

..... and coming up



Anyone who is willing to assist with the maintenance of our Parish Hall or help with events is always welcome, so if that could be you, please just come along to our next meeting on Tuesday 12th September at 7.30pm.

Parish Council

There was no Parish Council meeting in August but we did have a site meeting with representatives from Network Rail and Gloucestershire Highways about the dangers of driving under Jordan Hill bridge. Representatives from other Councils, including Newnham, Littledean and Cinderford, whose parishioners use the A48, also attended. Three residents from Jordan Hill also joined us. Eventually Network Rail accepted that the scrub growth on the railway embankment presented a problem and Highways acknowledged that the signage could be improved. However Network Rail claim that they are restricted in what growth they can remove and Highways claim that the road does not meet the criteria for reducing the speed limit, and both say that there are financial restraints for funding any works. However, they both left the meeting saying that they would attempt to push the issue up the scale of priorities with their respective organisations, but could not promise any results. Much of the tall vegetation is on a patch of land whose owner we had been unable to trace, but this land has now been sold and Highways suggested that the Parish Council apply to the Land Registry to ascertain who now owns this land. Both Network Rail and Highways also suggested that we take up the bridge and road safety issues with our MP, Mark Harper, in an attempt to get some pressure applied, as both sides say they are limited by legislation and regulations as to what they can achieve.

Planning

We have been notified that the application for the erection of an agricultural building at The Paddocks, Goose Lane has been refused but permission has been granted for work on the lime trees in the

village. Only one planning application had been received, which was for the erection of a two storey rear extension and single storey front extension at Chapel House in Broadoak, to which there were no objections.



The freshly painted seat

At the beginning of August, a group from the Community Payback Scheme came to carry out

some work on the play area at the Parish Hall. They made an excellent job of cleaning the surface of the play area and treated and painted the two memorial seats.

Footpaths A report from the Public Rights of Way officer shows that 12 footpaths in our parish have had attention of some sort recently, mainly clearing vegetation and improving signage. With over 65 miles of footpaths in our parish, there is plenty to keep them busy!

The next Parish Council meeting is on Monday 18th September at 7pm in the Parish Hall lounge. *Di Landon*

Road Closure



Ley Lane will be closed from 23.00 on 4th Sept to 05.00 on 5th Sept. For further information please go to:-

streetworks@gloucestershire.gov.uk

Westbury-on-Severn Parish
Church Friends
present

A CHRISTMAS TREE FESTIVAL

Saturday 2nd – Sunday 3rd December

2023

10am – 4pm



In Westbury Church

SPONSOR & DECORATE A TREE

as an individual, business, society, club or charity. (For more information:

westburychurchfriends21@gmail.com)

Come & light up Westbury Church with a tree to represent your club/society/ business/ charity. (For example, a gardening club may wish to use implements/ flowers/ seed packets etc as decoration.)

Please would you:

- Provide your own tree, stand, lights (battery operated only please) & decorations.

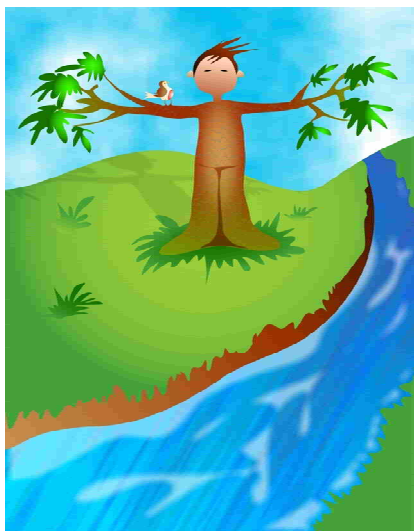
You may also wish to display literature, advertising for your club/ business. Advertising available in the programme.

All decorated trees & literature to be in the church and ready for viewing from 7pm on Friday 1st and removed at 4pm on Sunday 3rd December.

If you'd rather not decorate a tree, how about advertising your business in our programme? For more details contact Carol Barker or Frances Down.

westburychurchfriends21@gmail.com

FAMILY SERVICE
Sunday 17th September
10am at Westbury Church



There's a little man with a big problem and his name is Zachaeus, I wonder who will be able to help him?
He's hiding!! I think he really needs your encouragement.

**Vale of Castiard
Women's Institute**

Our next meeting will be on **Wednesday 20 September**, when "Mrs Fishy" will give a talk and demonstration on preparing fish for cooking. The meeting will be in the Flaxley Schoolroom at 7.30pm. Visitors and new members are always given a warm welcome. Please contact Gill Western, President, on 07879 532050 or Karen Johnson, Secretary, on 07879 386573 for more information.

CAFÉ ON THE GREEN

Thank you to all of you who braved storm Antonio, to come to the Café in August. A total of £115.20 was raised for Westbury Church Fabric Fund. It was great to see so many of you & special thanks to all those who make the Café possible. We look forward to seeing you on **Saturday 2nd of September**, when we will be supporting the Crohn's Society.

**Northwood Green
Gardening Club**

Our monthly meetings will resume on **Thursday 14th September**, when Ken Power will be telling us how to make good, nutrient-packed compost. Meetings take place at 7.30pm in the Northwood Green Social Hall. Visitors welcome.

There are a small number of places left on our coach trip to the RHS garden at Wisley on Saturday 16 September. £37 for non-members, which includes the coach fare, entrance to the gardens and a cream tea.

Please contact Karen Johnson on 07879 386573 or by email karenfayjohnson@gmail.com for more information.

Churchyard Working Party

We had a great turnout for our August working party and were lucky with the weather. There was a lot to do but, with ten of us there, we were able to give the roadside hedge a good trim and tidy, and remove the tangle of brambles against the south wall of the church.

There is still a lot to do so any extra help at our next session on **Sat 9th Sept** would be very welcome.

ELTON GIANT MAZES
MAZES BY TORCHLIGHT

BRING A TORCH
MAZES BY TORCHLIGHT

MUSIC BY BANSHEE

Friday Sep. 1st
7:00pm-11:00pm
Buy Tickets from the web site

Mazes are also open:
10:30 to 17:30 every day
UNTIL 3rd SEPTEMBER

BONFIRE & BBQ

Elton Giant Mazes,
Littledean Road,
Nawham-on-Severn,
Gloucestershire
GL14 1JU
01594 827 007
eltonmazes@gmail.com
eltonmazes.co.uk

Live music from Banshee
Glow Sticks, Bonfire, BBQ, Pop-Up Bar
Access to the 3 Maize Mazes
Great Fun for the whole family
Dog friendly

July Weather Report

Warmest Day. 7th. 28.5c
Warmest Night 7th-8th. 14.5c
Coldest Day. 4th. 13c
Coldest Night 25th-26th. 5c
Wettest Day. 14th. 23.5 mm
Total Rainfall. 108 mm
Number of Days with Rain. 20
Thunder on 9th
Predominant Wind Direction.
Westerlies
Average Maximum Temperature 20.5c
Average Minimum Temperature. 10.8c

Simon Phelps



Heritage Open Weekends

Sept 2023

Westbury Parish

Church and Spire are to be open as part of the National Heritage Open Events. Both will be open on Sat 9th and Sun 10th and also Sat 16th and Sun 17th, between 11.00am and 4.00pm. There will be conducted tours of the Spire on the hour and teas will be available in the Church. There will also be a talk on the **History and Restoration of the Dutch Water Gardens** by Jerry Green, Manager of the National Trust Westbury Court Gardens on **Wednesday 13th Sept at 7.00pm, in the Church**. Refreshments will be available. These are free events, however, donations towards the upkeep of the Parish Church will be gratefully received.

Join us this year Christmas shopping?

Autumn Craft Fair
And Table Top Sale

SUNDAY 24 SEPT
12noon - 2pm

Main Hall
Westbury On Severn
Parish Hall

BUYERS
Doors open at midday

TRADERS
Tables £15 each
Set Up from 11:00am

To book a table email
smittenbygifts@gmail.com

Westbury School

Plans are afoot to celebrate a significant date in our school's history this coming academic year. In November, Westbury-on-Severn CE Primary will be 175 years old! The children will be learning about the school's long history and what has happened in the world during this time period - much has happened since 1848!

A lot of the school's history is documented in the Gloucestershire Archives within the Heritage Hub in Gloucester, and it is fascinating learning about the running of the school, looking at old photos and seeing the architect's plans as the school has been extended over the years. We hope to share this with you during our anniversary celebrations in November, a chance for ex pupils, ex-staff, current members of our school community and friends to visit and see this history and we look forward to welcoming you!



As a small taster, this is a class photo from about 1928 with their Headmaster Mr Bosworth. Maybe you recognise some faces? Please do get in touch s.landon@westbury-on-severncofe.gloucs.sch.uk Sian Landon

Jen Wyman

Jen Wyman, who passed away in Gloucestershire Royal Hospital on Friday 11th August, will be much missed in this community, for which she did so much. We would like to share the words written by Pete and read at her funeral.



Jen was born and raised in Darlington, Co Durham, where she lived next door to both the junior and senior schools where she was educated. On leaving school she tried a couple of jobs which lasted a very short time before deciding to hitchhike to Windermere, where her sister Anne was work-

ing in a coffee shop for the summer season.

On her return, she decided to take up nursing and did her training at Bishop Auckland. While there, her parents took up the posts of Matron and Superintendent at the Westbury Infirmary (previously the Workhouse) and, when this closed, Westbury Court Nursing Home. On finishing her training, Jen decided to move to Westbury as well and in 1968, on a cricket trip to Southampton, she met and started talking to Pete. During their conversation Pete agreed to take Jen on a driving lesson a few days later. This was not a huge success as Jen had never been behind the wheel of a car before and Pete was very protective of his brand new Vauxhall Viva, and as a result

tempers were more than a little frayed. However, further dates occurred and just over a year later they were married. The following year Neil was born and while Jen was in hospital having him, Pete bought a cottage with an orchard in Northwood Green and fortunately, when Jen got to see it, she fell in love with it. Gail arrived a year later and ten years later Kay was born. They managed to get planning permission for two houses in their orchard in 1985 and moved into each one as they were completed, before moving to Pete's family home when his mother found the upkeep so difficult in her advancing years, building an annexe there for her.

Jen was very much a grass widow as Pete (and Neil) were very involved with cricket and other sporting pastimes, but she never complained and did cricket teas for 30 years. Neither did she complain when her menfolk were off on cricket or golf tours.

Jen was a real homemaker and was never happier than when she was with her children and grandchildren and going on family holidays and day trips. She was very involved with Westbury village life and was a member of the school PTA while the children attended, helped make costumes for Westbury Players and, along with Pete, ran the bar at the Parish Hall – all whilst also working nights at Westbury Court for over 30 years.

Our thoughts are with Pete and with Neil, Gail, Kay and all the family at this sad time.

Cricket

Westbury Wolfhounds v Parkend

On Sat 19th August, the 3rd string to the village's cricketing bow claimed a much needed win when playing against Parkend 2nds away .

Arriving in a tropical drizzle, the omens looked grim for yet another rain affected day in this non-hosepipe ban summer. Inspection of the pitch revealed some large puddles on the square presenting massive slip hazards and laundry bills for the older contingent, and when the covers were withdrawn a large puddle located in the middle of the wicket presented another challenge.

However, as the clouds parted, the ground staff got to work and soon the game was able to get under way, albeit reduced to 30 overs. The Westbury grizzled opening batting partnership of Wyman and your correspondent, both sensationally, controversially and brutally dropped from the seconds, got off to a cautious start before a short pitched ball caught Wyman out as it splashed into the soggy patch (*excuse the 50 shades language, Ed*) and he mistimed his hook and lobbed up a catch.

Talia Scott then strode to the wicket and her concentration was immediately tested by a procession of traction engines passing by, belching out coal fumes, tooting at critical moments and generally rattling along the adjacent road before stopping at the Woodman Arms for the drivers to have a quick pint.

However, not to be put off she proceeded to knock the ball around with a series of dabs, flicks and pulls and the score moved on to 50 with no drama before Parkend introduced their leg spinner, who proceeded to decimate the middle order. His first victim was your correspondent who took the unwise decision to get at him early, knowing how mentally fragile 14 year olds can be, and took on his first ball - a fizzing, drifting, dipping, flipper - with a wild effort to smack the ball down the chimney of one the traction engines — but missed it and was bowled out.

Unfortunately mental fragility cuts both ways and buoyed by this success the

young Shane Warne then ripped out the father/son combination of Alan and Ethan Kane in three balls, conceding zero runs, leaving the family Kane in disgrace, on his way to collecting 5 wickets.

Gary Hamilton strode to the crease looking ready to post his first big score of the season but, despite possessing the physique of an Olympic sprinter, he has lost a yard or so of pace over the years and was again run out, and this time it wasn't my fault - as I helpfully pointed out on his return to the pavilion.

However Westbury's innings was restored by Skipper Chris Wayman (38no) and, after the departure of Scott for a fine 27, Ollie Jelfs (33no), playing an array of shots around the ground giving Westbury a fighting 162 total.

Parkend's run chase was throttled before it really began by an excellent opening spell from debutant Tim Lilley, a 6' 4" or 6' 5" (a debate that rolled on deep into the evening) who posted the highly impressive figures of 6 overs, 2 wickets for a mere 5 runs. Charlotte Dunn also impressed for the other end claiming a wicket and Lilley also chipped in with a

direct hit run out just for good measure. The 1st change bowlers continued to run through the Parkend order with Eve Powell missing out on a 5 wicket haul by only 2 wickets, using her ever positive logic, leaving her with 3 wickets, although the young Parkend number 8 did smack her for six into the Woodman Arms (or it would have ended up there were the ball not cut off by a passing Peugeot.) As an owner of a Peugeot I can predict the car was written off as a result.

Ethan Kane restored some dignity to the family by wrapping up the tail with 2 wickets and their not out opener stomped off in a huff as he realised their number 11 hadn't shown up - he may have been a traction engine driver - we will never know.

Westbury won by 98 runs.

PS The 1sts and 2nds won as well on 19th Aug. Fran Stirrup got 94 for the 2nds but I didn't see it as I was brutally, sensation-ally and cruelly dropped and so, like a falling tree in the woods, it didn't happen. Ian Martin who waltzed back into the team like a Strictly pro didn't bat or bowl - ha ha.

Mark Landon

Rugby

Sept Fixtures



Saturday, 16 September 2023 Home
Westbury-on-Severn v Old Cryptians II

Saturday, 23 September 2023 Away
Gordon League II v Westbury-on-Severn

Saturday, 30 September 2023 Home
Westbury-on-Severn v Coney Hill II

On Sunday 21st August Westbury on Severn RFC Chairman's select XI took on Huntley Cricket Club Chairman's XI at the Gillmans Oval (Huntley).

They lost but had a great afternoon.

Cricket 70th Anniversary Players v Chairman's XI

(Continued from page 1)

The match was very well fought out with the Players narrowly taking the win. Players and spectators old and new came together to enjoy a game of cricket, look through some



The Chairman's XI

memorabilia and enjoy cake and BBQ food together.

The whole day was a real success and we could not be prouder of our club and everything that it has achieved.

On behalf of our Club Chairman Ian Dunn, we would like to say

a huge thank you to every single person who contributed to the 70th Celebrations this weekend. The club spirit was shining strongly and the successes celebrated this weekend will continue long into the future.



The Players XI

The cricket season is drawing towards its close and soon the pitch will be put to bed for the winter but while we all rest up ready for next year, we would like to take this opportunity to say a huge thank you to everyone who works so hard all year round to make WOS cricket club the fantastic place it is.

Emma Nice

Editor: Andrew Landon
Everything else: Di Landon
diana.landon12@gmail.com
Hayden Farm, Rodley, Westbury-on-Severn
GL14 1RE
01452 760531